

COMBINING OLD AND NEW

BY ADDING A NEW LAYER ( OF ADJUSTMENT ) TO THE CREA BUILDING, IT IMPROVES UPON THE STRUCTURES RELATIONSHIP WITH THE GROUND AND THEREFORE TO THE SURROUNDING PUBLIC SPACE. THE NEW FAÇADE ACTS AS A FILTER BETWEEN INSIDE AND OUTSIDE WHICH INFLUENCES THE INTERACTION.

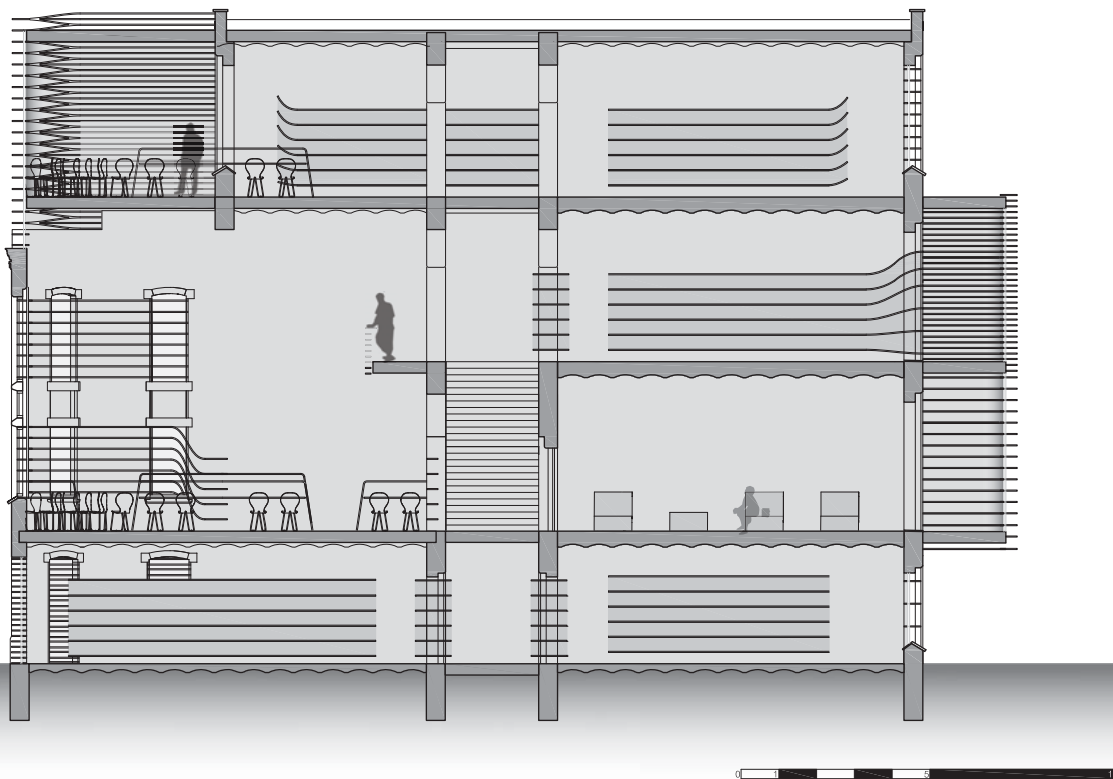
DEPENDING ON WHICH NEW FUNCTIONS ARE ADDED, ( A PRIVATE STUDY SPACE OR THE ARCHIVE OF THE HISTORY DEPARTMENT FOR EXAMPLE) THERE IS MORE OR LESS TRANSPARENCY TO IMPROVE THE INTERACTION BETWEEN THE OUTSIDE SPACE AND THE INTERIOR WHICH ALSO IMPROVES PRIVACY WHEN NECESSARY.



SECTION EE



VIEW MAIN STAIRCASE 2ND FLOOR



SECTION CC

